

KLINGER®soft-chem

KLINGER®soft-chem brings the sealing technology on a new level and it is the best choice for operating conditions up to 260°C.

Multi-directional expanded PTFE
 Excellent corrosion resistance together with superior sealability create a high-grade gasket material for a wide field of applications in your plant.



Key features:

- » Multi-directional expanded PTFE
- » Suitable for a wide range of applications

Benefits:

- » Easy to cut
- » Excellent sealing at low stress
- » Seals irregular flanges
- » No ageing of the material

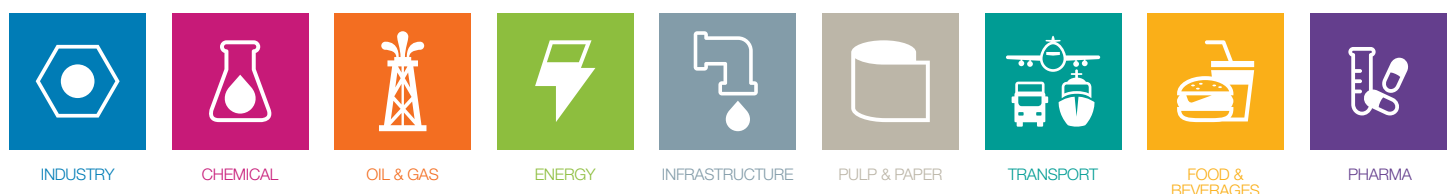
Certificates and approvals:

- » Conforms to the regulation (EU) No. 1935/2004 (incl. 10/2011)
- » FDA conformity (components of KLINGER®softchem comply with the FDA requirements)

Properties: referring to KLINGER® top-chem product range

SUPERIOR				
EXCELLENT				
VERY GOOD				
GOOD				
MODERATE				
	MECHANICAL RESISTANCE	THERMAL RESISTANCE	SEALABILITY	CHEMICAL RESISTANCE

Industries:



Typical technical data for thickness 2.0 mm:

Compressibility ASTM F 36 M		%	50-60
Recovery ASTM F 36 M		%	13-17
Stress relaxation DIN 52913	30 MPa, 16 h/150°C	MPa	15
KLINGER cold/hot compression	thickness decrease at 23°C	%	35
25 MPa	thickness decrease at 150°C	%	30
Tightness	DIN 28090-2	mg/s x m	0.001
Density		g/cm ³	0.9

Dimensions of the standard sheets:

Sizes:

1500 x 1500 mm

Thicknesses:

1.5 mm, 2.0 mm, 3.0 mm

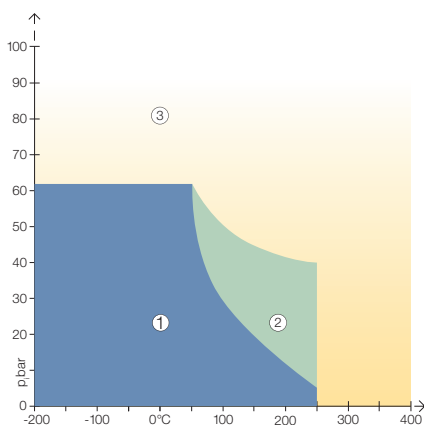
Tolerances:

Thickness $\pm 10\%$

Length ± 50 mm, width ± 50 mm

Other thicknesses, sizes and tolerances on request.

pT diagram for thickness 2.0 mm:



①

In area one, the gasket material is normally suitable subject to chemical compatibility.

②

In area two, the gasket material may be suitable but a technical evaluation is recommended.

③

In area three, do not install the gasket without a technical evaluation.

Always refer to the chemical resistance of the gasket to the media.

